



NETpodium Rack System

Introducing a Modular and Versatile Open-frame/ Closed Rack Solution

The NETpodium rack system is designed to offer all the features required to support copper and fiber cable management, along with active platforms, in a single 19" 45U footprint. As data centers evolve, management of these three elements in a single rack whilst maintaining availability, is a challenge. NETpodium's answer to the challenge is an innovative design that positively impacts the management of the physical infrastructure in four ways:

1. **Storage** - Two large vertical channels at the core of the frame allow installed copper and fiber cables to be correctly stored whilst maintaining correct bend radius and physical protection.

2. **Accessibility** - Cable management arms specifically designed to organise patch cords for easy access and re-access during MAC work (Moves Adds and Changes), and to ensure bend radius protection during patch cord transition from the panel to vertical ducting

3. **Presentation** - Multiple fixing locations allow accessories to be located exactly where needed along the entire 45U height of the rack. "Tool-Less" fasteners for securing panels and accessories can be inserted in to a T-Channel in the vertical posts and guided to the correct location before being simply snapped into place.

4. **Efficiency** - NETpodium when used in conjunction with CommScope's Universal Connectivity Platform (UCP), results in a significant increase in Rack Efficiency (RE) where rack efficiency is the ratio of percentage of available space used to the amount of usable space within the rack envelope.

In addition to these four points NETpodium can be deployed to serve in many different functional areas of a data center. As a frame it can be bayed in a line-up or placed back-to-back with other NETpodium racks to be used as a cross-connect. Configured as a closed cabinet it can offer the physical security required for End of Row, Server Rack, or Entrance Facility solutions.

NETpodium deployed with UCP offers a versatile solution. Together they give the flexibility to deploy and then adapt a physical infrastructure to meet, as yet unforeseen, networking needs as they arise.

NETpodium Rack System

Enclosure & Front Doors

Product Features

- **Designed To Support UCP**
Offers the ultimate in rack space efficiency, allowing patching inside or outside the 19" envelope.
- **Open Frame or Cabinet Option**
Allows for deployment in different areas of a data center.
- **Supports Baying or Back-To-Back Line Up**
Can be used in a cross-connect environment.
- **Quick Install**
Easy construction with cardboard guide templates, leading to faster installation turn-around.
- **Tool-Less Installation**
Snap fit fasteners for fast deployment of accessories every 1/2U.
- **High Density Cable Managers**
Offers bend radius and mechanical protection for up to 48 (9 mm diam.) patch cords. Rubber entry/exit retainers ensure cable captivity, preventing accidental disturbance of patch cords.

NETpodium Rack System

FEATURES

- Dimensions WxDxH = 1000x600x2200mm
- 45U
- 2 x 45 Cable managers included (except for Back-to-Back version)
- 2 large vertical cable ducts included
- Universal 19" Mounting rails according EIA 310

Color: black (RAL 9005)

| Description | Part Number |
|---|-------------|
| NETpodium Rack 1000x600 | 1-1671405-1 |
| NETpodium Rack 1000x600 for Back-to-Back configuration (without cable managers) | 1-1671405-2 |



Front Door

FEATURES

- Standard solid door, (optional: perforated metal or plexiglass)
- Bi-directional doors open to the left and right for maximum freedom during handling

Color: black (RAL 9005)

| Description | Part Number |
|-------------|-------------|
| Front Door | 1-1671545-1 |



NETpodium Rack System

Panels & Covers

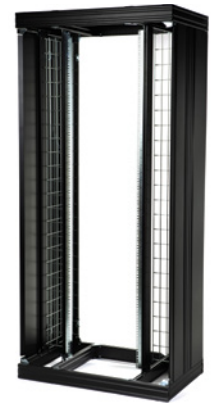
Side Panel

FEATURES

- Solid aluminum sidepanel to cover the sides of the cabinet
- Easy to add and remove

Color: black (RAL 9005)

| Description | Part Number |
|------------------|-------------|
| Side Panel Left | 1-1671578-1 |
| Side Panel Right | 1-1671578-2 |



Back Panel

FEATURES

- Solid aluminum back panel to cover the backside of the cabinet
- Easy to remove

Color: black (RAL 9005)

| Description | Part Number |
|-------------|-------------|
| Back Panel | 1-1671579-1 |



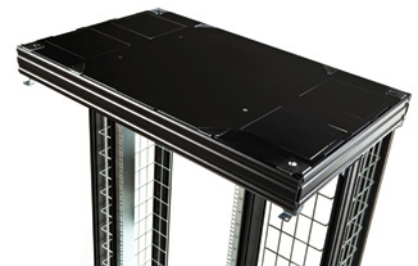
Top Cover

FEATURES

- Aluminum top panel with 4 knock-out access ports for optimal cabling access

Color: black (RAL 9005)

| Description | Part Number |
|-------------|-------------|
| Top Cover | 1-1671555-1 |



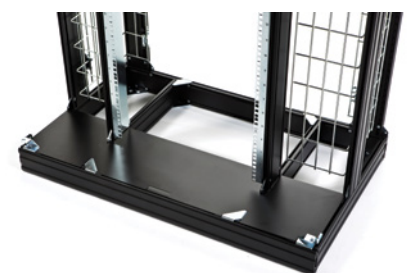
Bottom Cover

FEATURES

- Aluminum bottom panel to block airflow

Color: black (RAL 9005)

| Description | Part Number |
|--------------|-------------|
| Bottom Cover | 1-1671554-1 |



NETpodium Rack System

Accessories

Baying Kit

FEATURES

- Kit to be used to attach and secure two cabinets side-by-side or back to back



| Description | Part Number |
|-------------|-------------|
| Baying Kit | 1-1671587-1 |

Overhead Cabling Pathway

FEATURES

- Overhead cabling pathway, including bend control for both Twisted Pair and Fiber cable
- A cost effective way of routing cords from one cabinet to an adjacent cabinet
- Dim holes: 185x175mm
- Max capacity = +/- 120 cables 9mm



Color: black (RAL 9005)

| Description | Part Number |
|--------------------------|-------------|
| Overhead Cabling Pathway | 1-1671508-1 |

Heavy Duty Brackets/Tray

FEATURES

- 1U fixed style rack mount
- Designed to be used in a back to back configuration
- Can accept electronic equipment up to 500 kg
- Bracket or tray version available

Color: black (RAL 9005)



| Description | Part Number |
|--------------------|-------------|
| Heavy Duty Bracket | 1-1671569-1 |
| Heavy Duty Tray | 1-1671569-2 |



www.commscope.com

Visit our website or contact your local CommScope representative for more information.

© 2015 CommScope, Inc. All rights reserved.

All trademarks identified by ® or ™ are registered trademarks or trademarks, respectively, of CommScope, Inc.

This document is for planning purposes only and is not intended to modify or supplement any specifications or warranties relating to CommScope products or services.

PS-310512.2-EU (10/15)