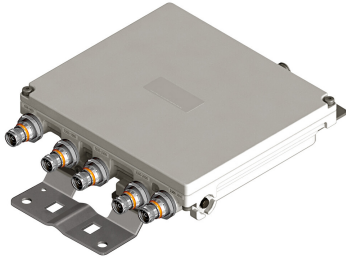


# E14F20P14

---



Ultra Compact Single Pentaplexer 700-900/1400-1800/2100/2300-2600/3300-3800, dc bypass on low band, with 4.3-10 connectors

- New Combining Solution to introduce 5G, 3.5GHz band
- Industry leading PIM performance
- New 4.3-10 connectors for improved PIM performance and size reduction
- Suitable for feeders cables reduction
- Single configuration

## Product Classification

**Product Type** Pentaplexer

## General Specifications

**Color** Gray

**Modularity** 1-Single

**Mounting** Pole | Wall

**Mounting Pipe Hardware** Band clamps (2)

**RF Connector Interface** 4.3-10 Female

**RF Connector Interface Body Style** Medium neck

## Dimensions

**Height** 58.5 mm | 2.303 in

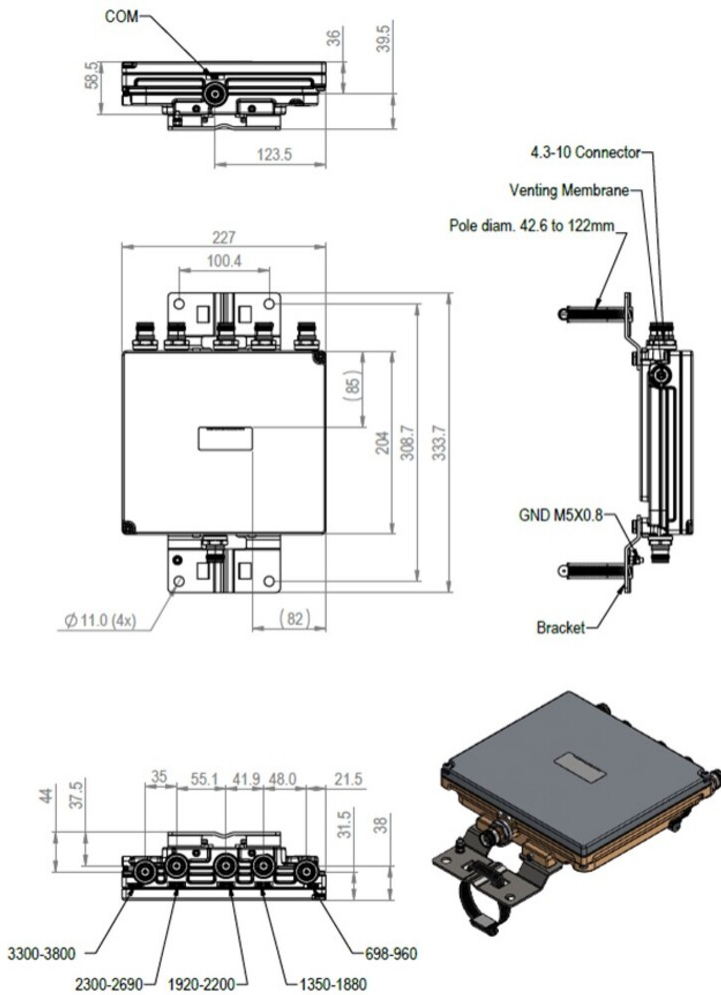
**Width** 227 mm | 8.937 in

**Depth** 204 mm | 8.032 in

**Mounting Pipe Diameter Range** 43-122 mm

## Outline Drawing

# E14F20P14



## Electrical Specifications

<b>Impedance</b>	50 ohm
<b>License Band, Band Pass</b>	APT 700   CEL 850   CEL 900   DCS 1800   EDD 800   IMT 2100   IMT 2600   LMR 800   LMR 900   SDL 1400   TDD 2300   TDD 2600   TDD 3500   USA 700   WCS 2300

## Electrical Specifications, dc Power/Alarm

<b>dc/AISG Pass-through Method</b>	Factory set
<b>dc/AISG Pass-through, combiner</b>	Branch 1
<b>dc/AISG Pass-through, demultiplexer</b>	Branch 1
<b>Lightning Surge Current</b>	5 kA
<b>Lightning Surge Current Waveform</b>	8/20 waveform

# E14F20P14

## Electrical Specifications, AISG

<b>AISG Carrier</b>	2176 KHz $\pm$ 100 ppm
<b>AISG Pass-through Current, maximum</b>	2.5 A
<b>Insertion Loss, maximum</b>	0.5 dB

## Electrical Specifications

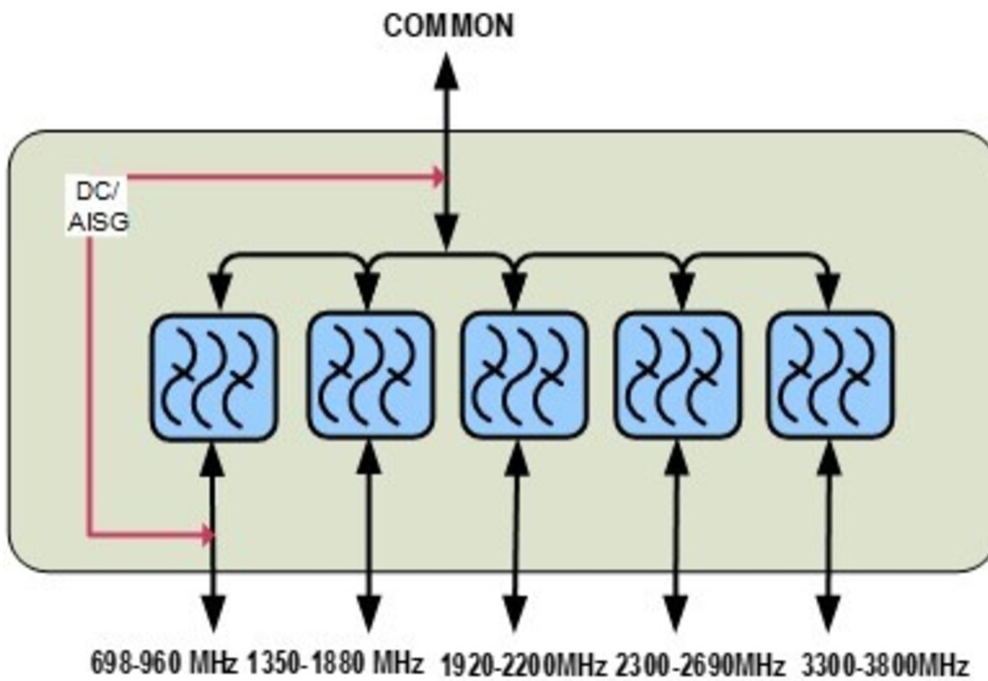
<b>Sub-module</b>	<b>1   2</b>	<b>1   2</b>	<b>1   2</b>	<b>1   2</b>	<b>1   2</b>
<b>Branch</b>	1	2	3	4	5
<b>Port Designation</b>	PORT 1 698-960	PORT 2 1350-1880	PORT 3 1920-2200	PORT 4 2300-2690	PORT 5 3300-3800
<b>License Band</b>	APT 700, Band Pass LMR 800, Band Pass LMR 900, Band Pass USA 700, Band Pass CEL 850, Band Pass CEL 900, Band Pass EDD 800, Band Pass	SDL 1400, Band Pass DCS 1800, Band Pass	IMT 2100, Band Pass	WCS 2300, Band Pass TDD 2300, Band Pass TDD 2600, Band Pass IMT 2600, Band Pass	TDD 3500, Band Pass

## Electrical Specifications, Band Pass

<b>Frequency Range, MHz</b>	<b>698–960</b>	<b>1350–1525 1710–1880</b>	<b>1920–2200</b>	<b>2300–2690</b>	<b>3300–3800</b>
<b>Insertion Loss, typical, dB</b>	0.3	0.3	0.3	0.25	0.2
<b>Return Loss, typical, dB</b>	20	20	20	20	16
<b>Isolation, typical, dB</b>	52	52	52	52	52
<b>Input Power, RMS, maximum, W</b>	100	100	100	100	100
<b>Input Power, PEP, maximum, W</b>	1000	1000	1000	1000	1000
<b>3rd Order PIM, typical, dBc</b>	-163	-163	-163	-163	-163
<b>3rd Order PIM Test Method</b>	Two +43 dBm carriers	Two +43 dBm carriers	Two +43 dBm carriers	Two +43 dBm carriers	Two +43 dBm carriers

## Block Diagram

# E14F20P14



## Mechanical Specifications

**Wind Speed, maximum** 240 km/h | 149.129 mph

## Environmental Specifications

**Operating Temperature** -40 °C to +65 °C (-40 °F to +149 °F)

**Corrosion Test Method** IEC 60068-2-11, 30 days

**Environmental Test Method** ETSI EN 300 019-1-4

**Ingress Protection Test Method** IEC 60529:2001, IP67

**Vibration Test Method** IEC 60068-2-6

## Packaging and Weights

**Included** Mounting hardware

**Volume** 2.7 L

**Weight, net** 3.7 kg | 8.157 lb

**Weight, without mounting hardware** 3.2 kg | 7.055 lb