

FACT NG4 CHASSIS FOR MODULES & ADAPTER PACKS

Contents

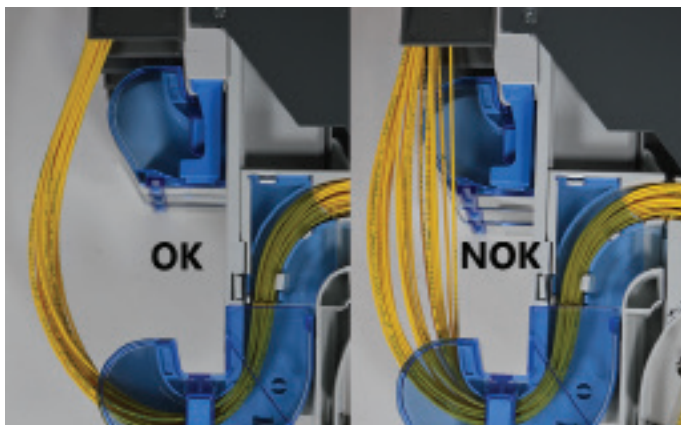
1.	General product information	1	6.	Installation of the modules	3
2.	Warnings and caution	1	7.	Routing the patch cords (modules)	5
3.	Product image	2	8.	Installation of the adapter packs	7
4.	Kit content	2	9.	Routing the patch cords (adapter packs)	9
5.	Mounting FACT chassis in rack	2	10.	Trademarks	11
5.1.	Mounting FACT chassis	2	11.	Contact Information	11
5.2.	Dismounting FACT chassis.....	2			

1. General product information

The universal FACT NG4 chassis (FACT-xENG4) for modules & adapter packs supports the NG4-access connectivity packs and modules that easily snap in the chassis. It accommodates SC, LC and MPO adapter packs, MPO-modules (MPO to LC, or MPO to SC), Cabled modules (CMOD) and Value-added modules (VAM).

2. Warnings and caution

- Fiber optic cables may be damaged if bent or curved to a radius that is less than the recommended minimum bend radius. Always observe the recommended bend radius limit when installing fiber optic cables and patch cords.
- Exposure to laser radiation can seriously damage the retina of the eye. Do not look into the ends of any optical fiber. Do not assume the laser power is turned off or that the fiber is disconnected at the other end.



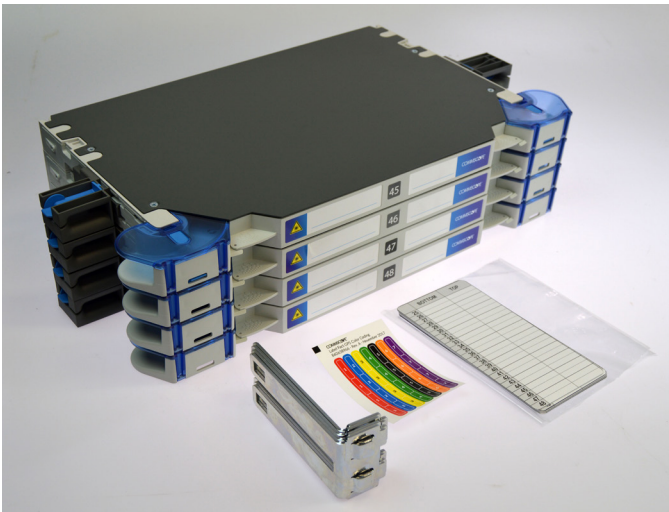
- Pay attention to the routing of the patch cords. These should move/hang freely, where they leave the bend control. If you see that there is tension occurring on the patch cords, please reroute these.

3. Product image



Note: FACT chassis with LC-Adapters shown as example.

4. Kit content



- FACT element NG4
- Brackets
- Color coding labels
- Transparent pockets with labels

5. Mounting FACT chassis in rack

5.1. Mounting FACT chassis



5.1.1. Prepare the rack with the brackets on the position where you want to install the FACT chassis (by sliding them in).



5.1.2. Take the FACT chassis with both hands and align with the brackets on both sides.



5.1.3. Slide the FACT chassis into the fingers until you hear a "clicking noise".

5.2. Dismounting FACT chassis

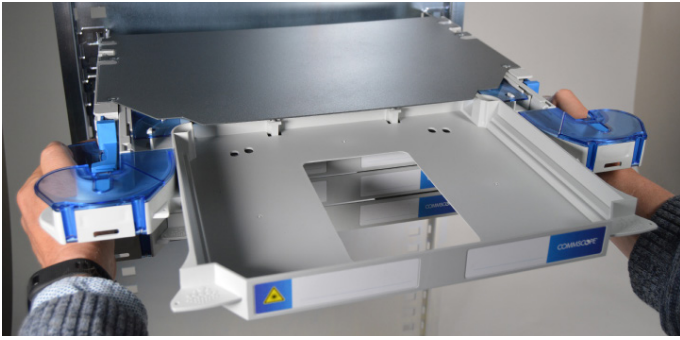


5.2.1. Open upper drawer (releasable).

Note: empty drawer is shown. This one is marked at the front (blue marking at the bend control).

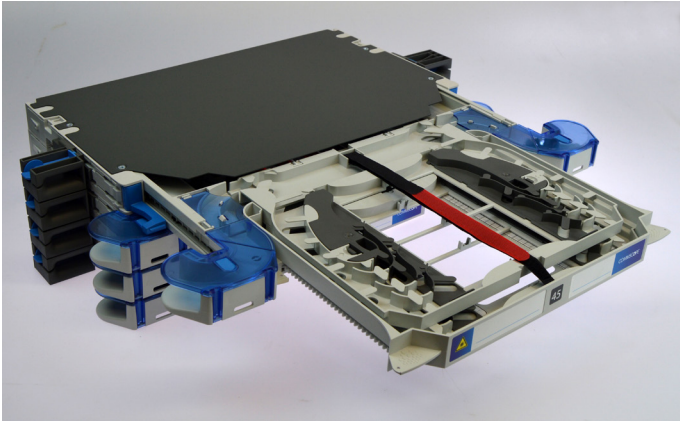


5.2.2. Pull the blue puller locks (make sure both sides -left & right- are in the unlocked position).

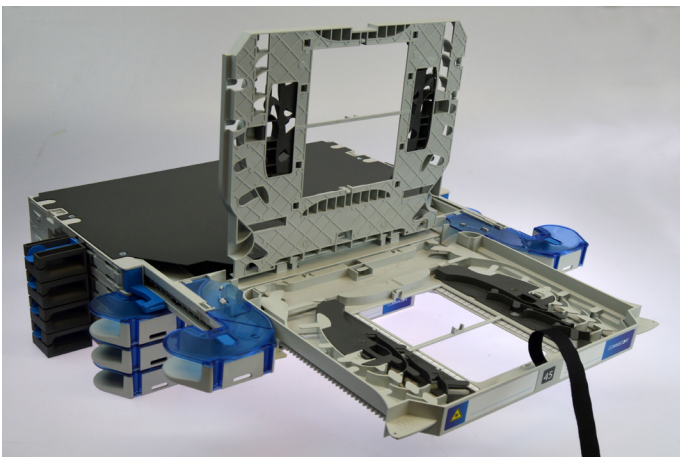


5.2.3. Slowly slide the FACT chassis out (pull simultaneously on both sides, with both hands).
Note: empty drawer is shown.

6. Installation of the modules



6.1. FACT element is provided with 2 trays (1 module per tray) per drawer.



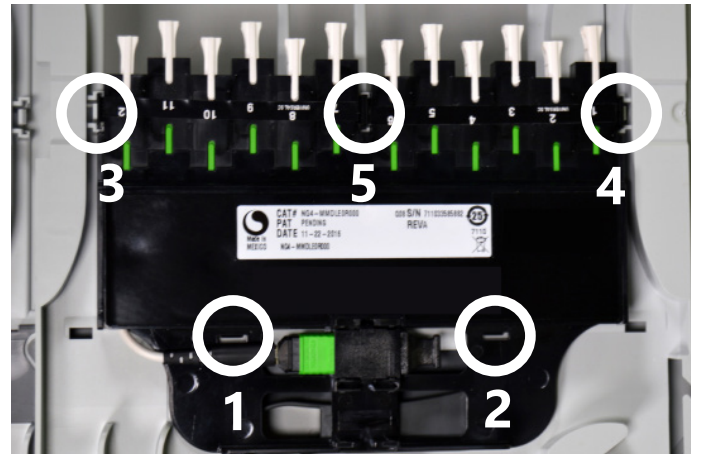
6.2. To access the bottom tray, remove the velcro and rotate the top tray to a 90° position.



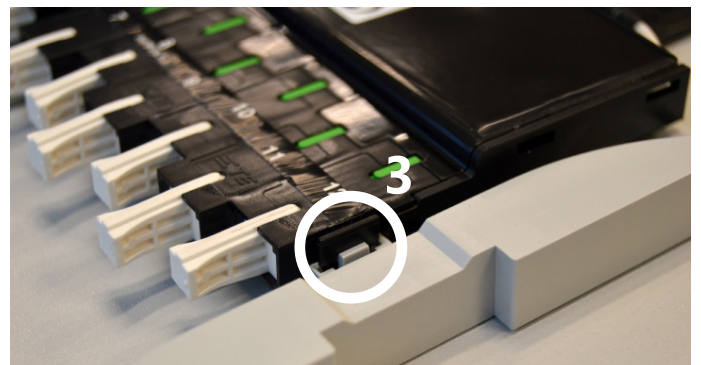
6.3. Use the latch to detach the insert on the desired side.



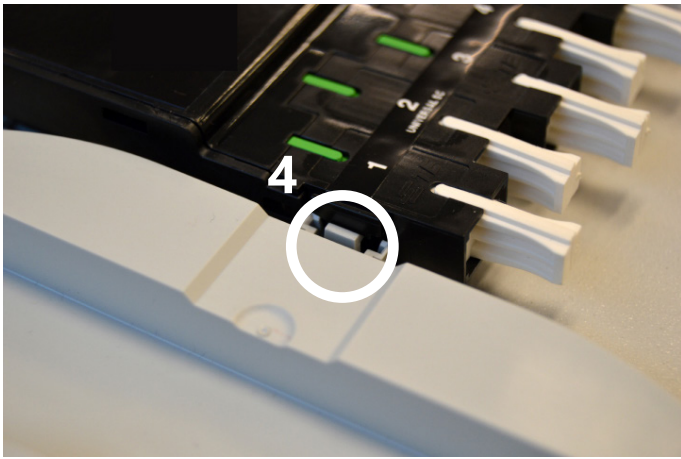
6.4. Remove the insert.



6.5. Align the module in on the side where the insert was removed, by placing it on top.



6.6. Align the module as illustrated. Don't push it in yet.



6.7. Align the module as illustrated. Don't push it in yet.



6.10. Push in snapping feature number 3.



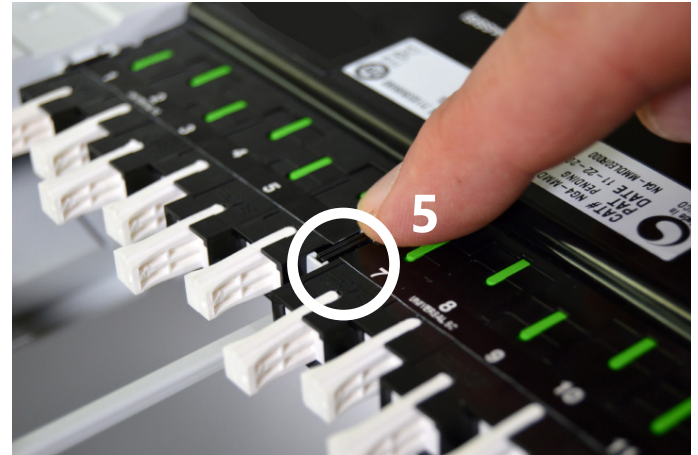
6.8. Push in snapping feature number 1.



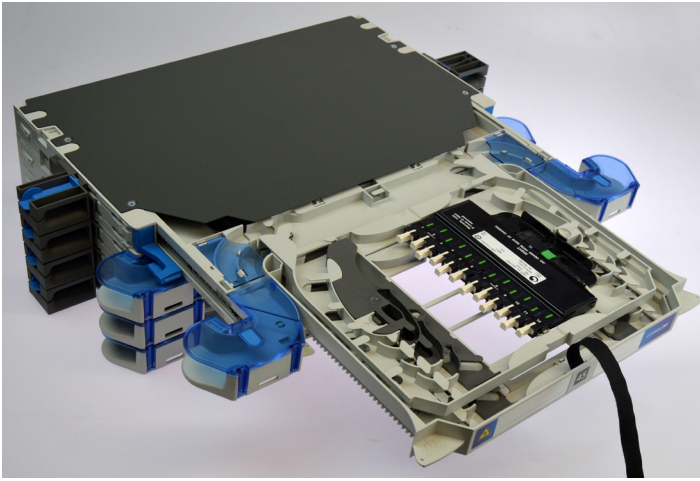
6.11. Push in snapping feature number 4.



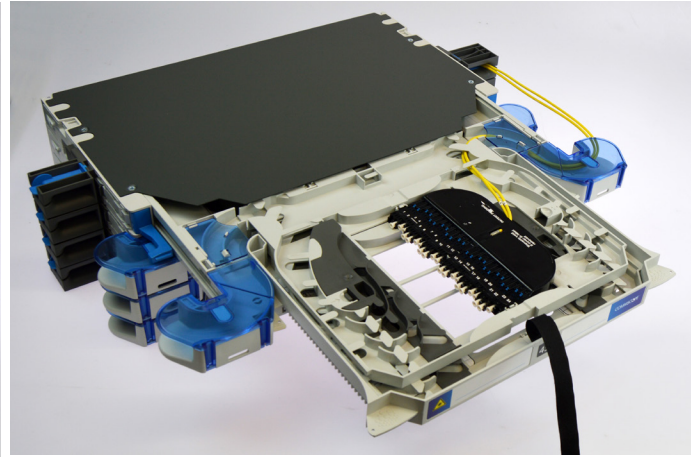
6.9. Push in snapping feature number 2.



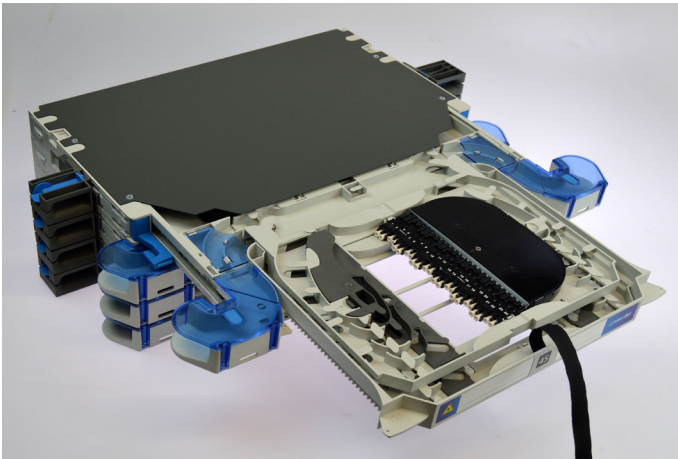
6.12. Push in snapping feature number 5.



6.13. SC-MPO Module installed.



6.16. Cabled Module installed.



6.14. VA Module installed.



6.15. LC-MPO Module installed

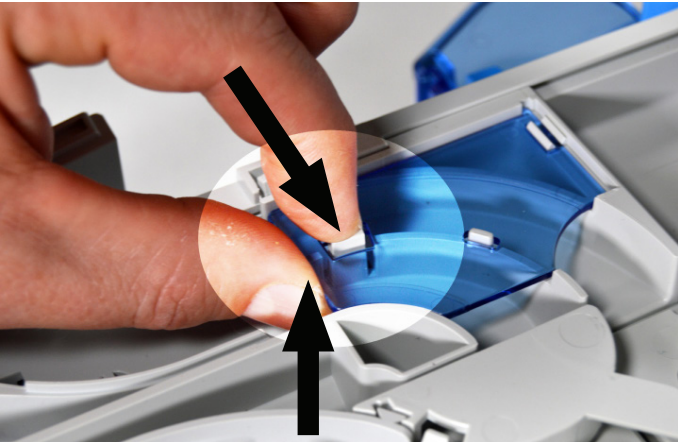
7. Routing the patch cords (modules)



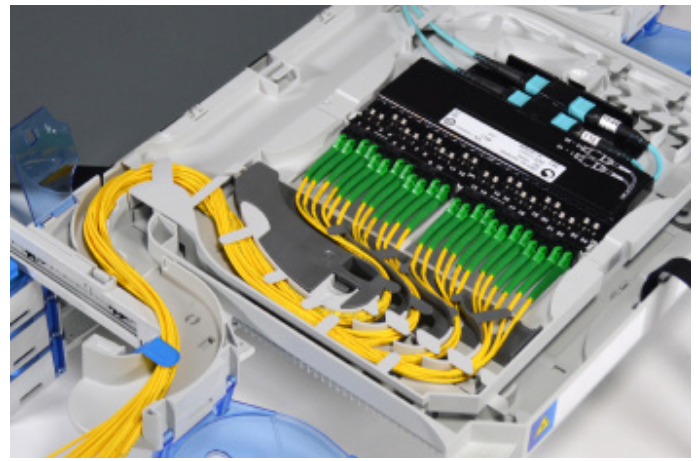
7.1. Open the bend control cover. Unlatch the snapping feature (on the backside of the bend control) as shown.



7.2. The retaining feature can be opened (hinged back) if additional space is needed (optional).



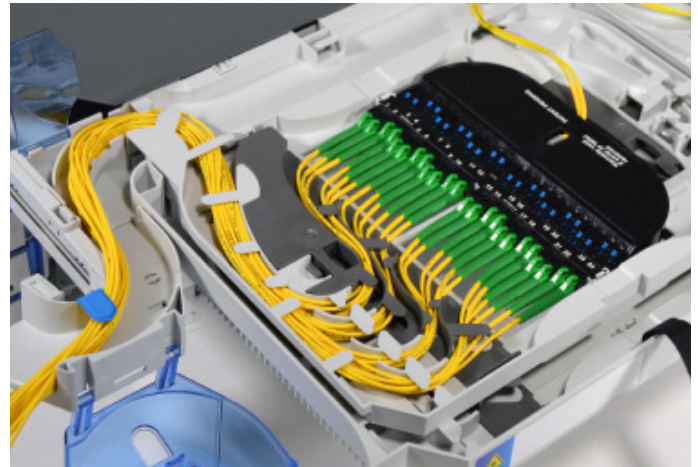
7.3. Open the back lid by pushing the snap feature to the inside and then lifting the lid.



7.6. Route the patch cords through the first bend as illustrated. Use 6 patch cords per bend control for the LC-MPO Module. Clean the connectors before installing!



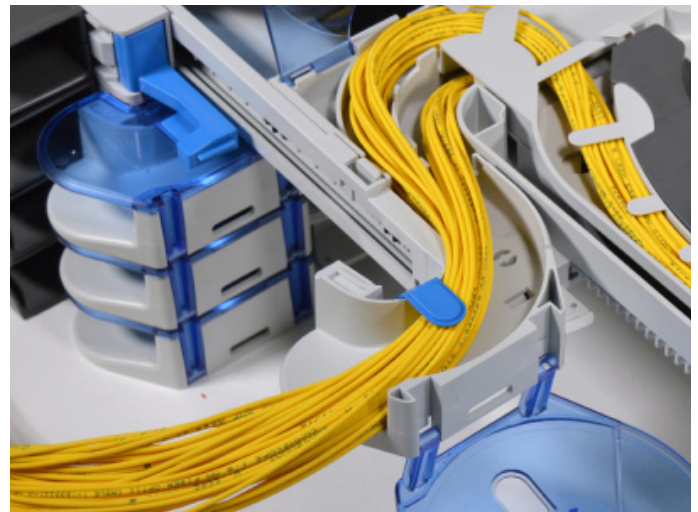
7.4. Route the patch cords through the first bend as illustrated. Use 3 patch cords per bend control for the SC-MPO Module. Clean the connectors before installing!



7.7. Route the patch cords through the first bend as illustrated. Use 6 patch cords per bend control for the Cabled Module. Clean the connectors before installing!



7.5. Route the patch cords through the first bend as illustrated. Use 6 patch cords per bend control for the VA Module. Clean the connectors before installing!



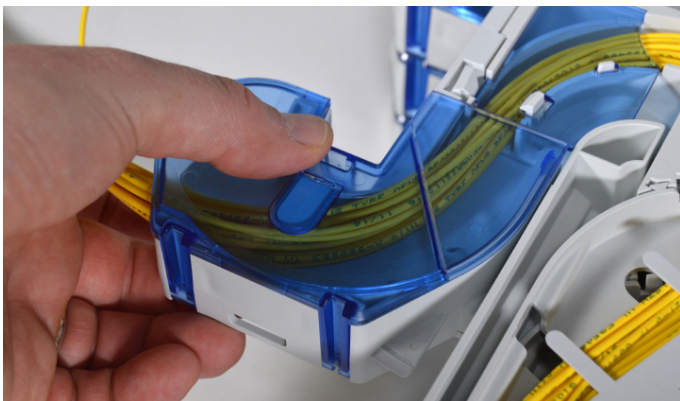
7.8. Route the patch cords to the back side of the FACT element.



7.9. When you route both trays, it should look as illustrated.



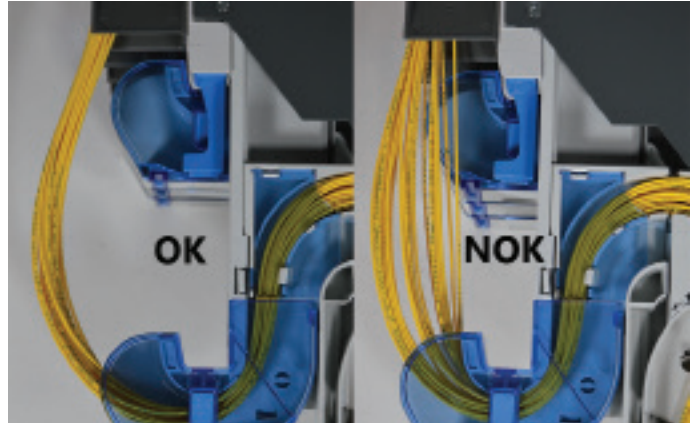
7.10. Carefully close the back lid.



7.11. Close the bend control cover (retaining feature down).

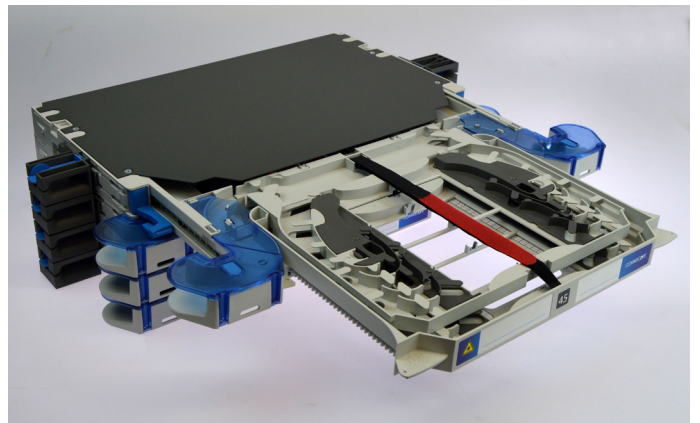


7.12. Route the patch cords through the trumpet.

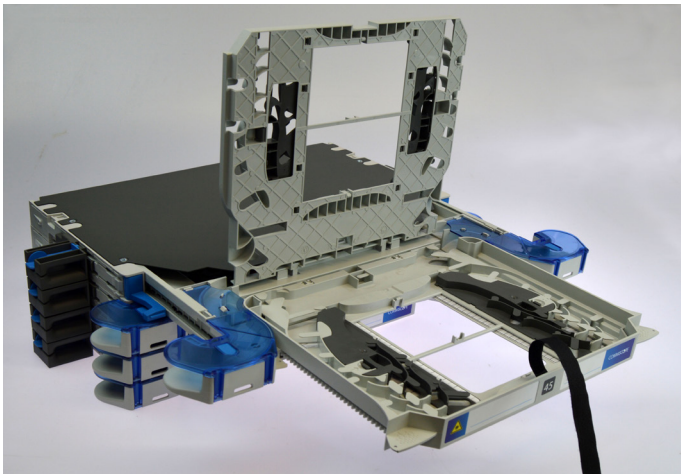


7.13. Before closing the drawer, pay attention to the patch cord routing.

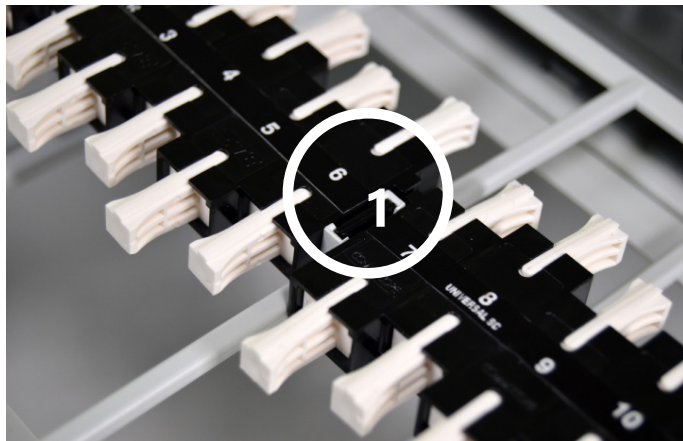
8. Installation of the Adapter Packs



8.1. FACT element is provided with 2 trays (2 adapter packs per tray) per drawer.



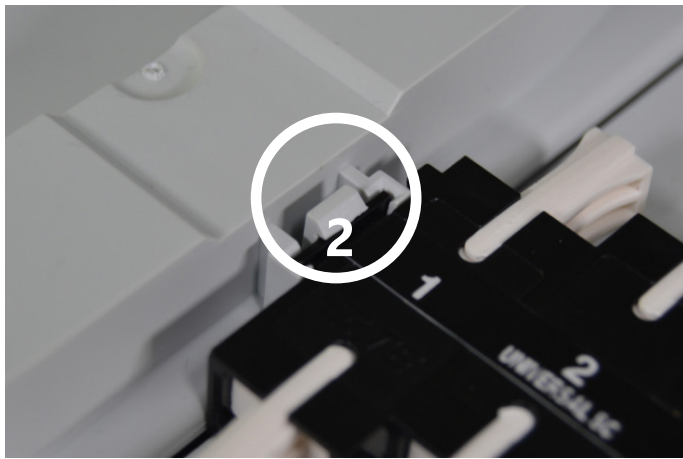
8.2. To access the bottom tray, remove the velcro and rotate the top tray to a 90° position.



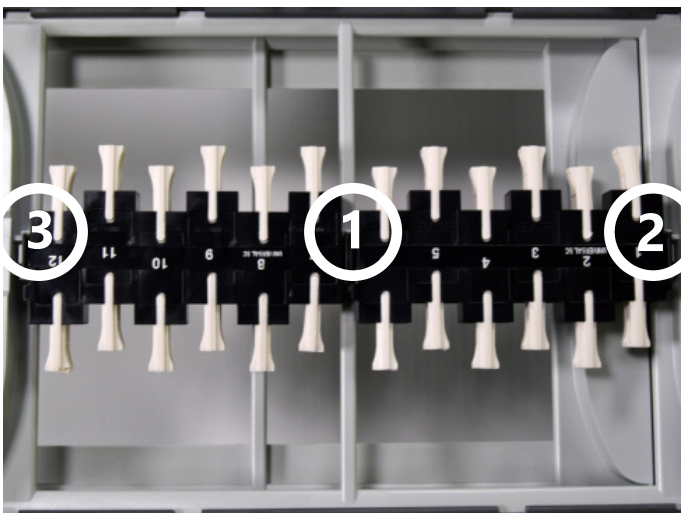
8.5. Align feature number 1 and push it in (flush with edge).



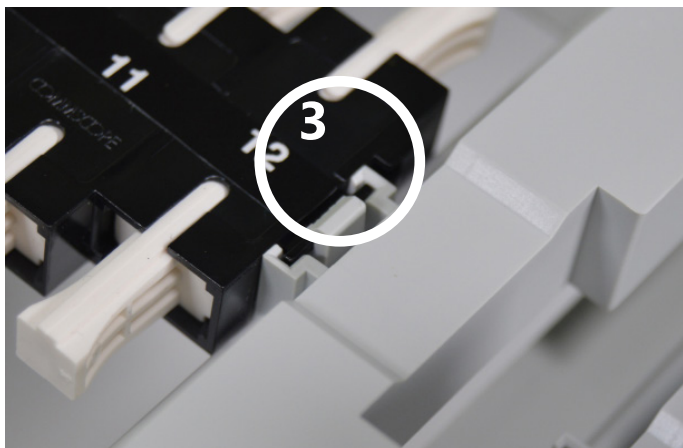
8.3. Align the Adapter Packs.



8.6. Align snapping feature number 2 and push it in.

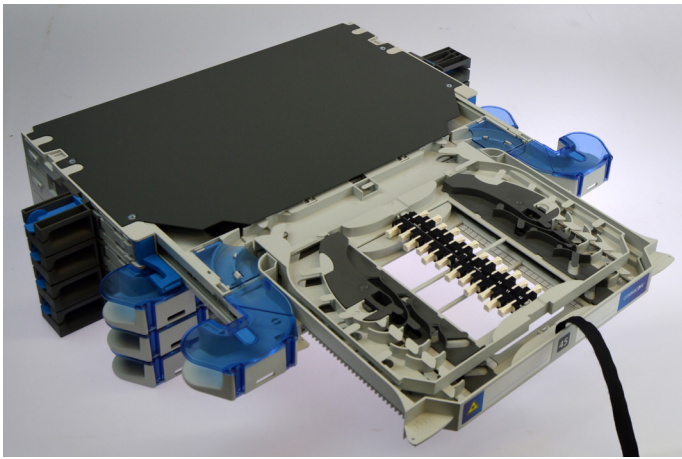


8.4. Make sure that features 1, 2 & 3 are aligned correct.

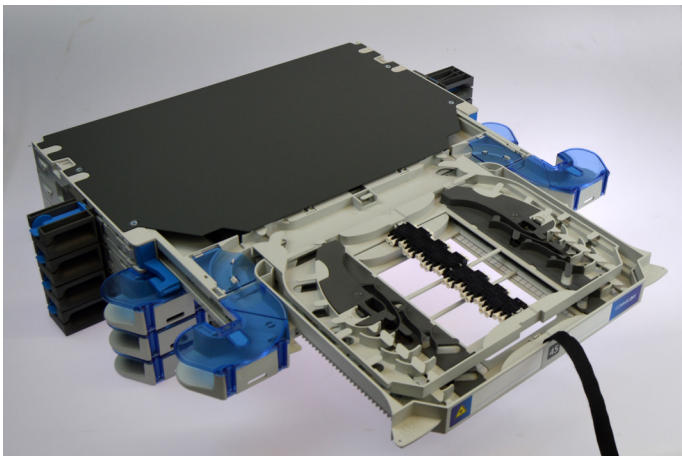


8.7. Align snapping feature number 3 and push it in.

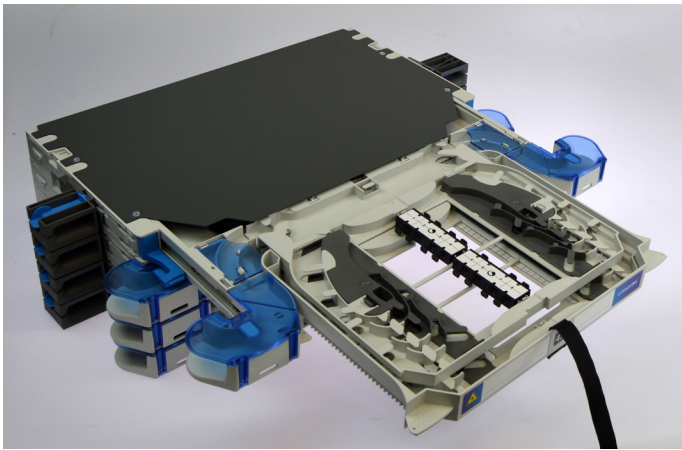
9. Routing of the patch cords (Adapter Packs)



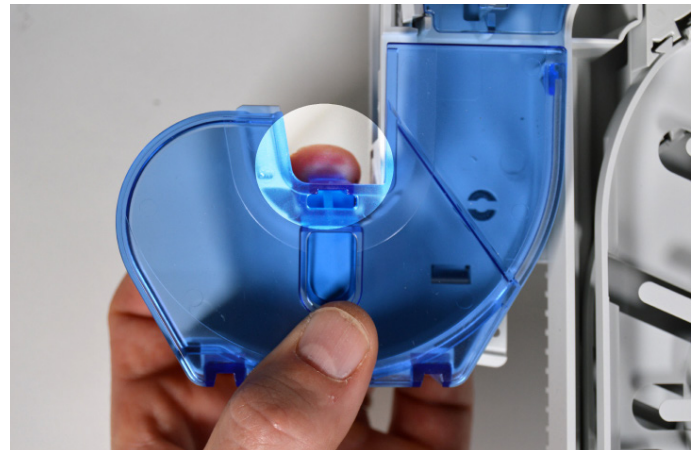
8.8. SC-SC Adapter Packs installed.



8.9. LC-LC Adapter Packs installed.



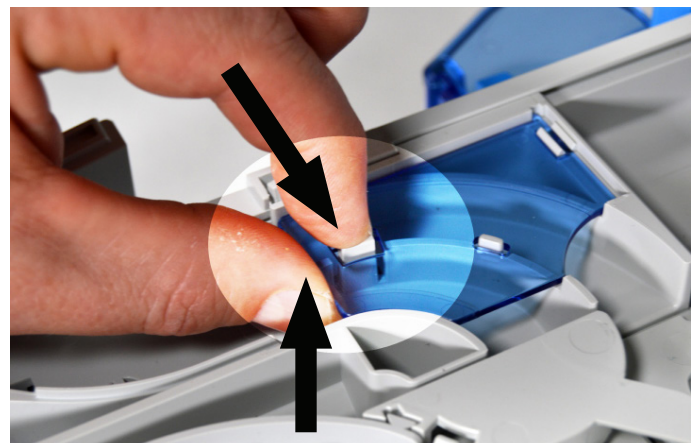
8.10. MPO-MPO Adapter Packs installed.



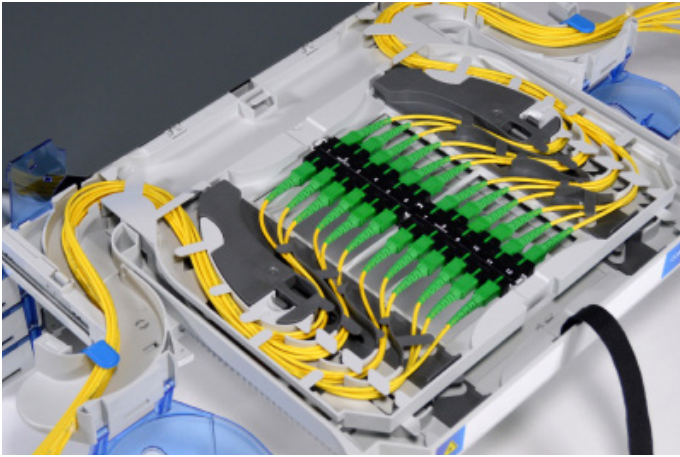
9.1. Open the bend control cover. Unlatch the snapping feature (on the backside of the bend control) as shown.



9.2. The retaining feature can be opened (hinged back) if additional space is needed (optional).



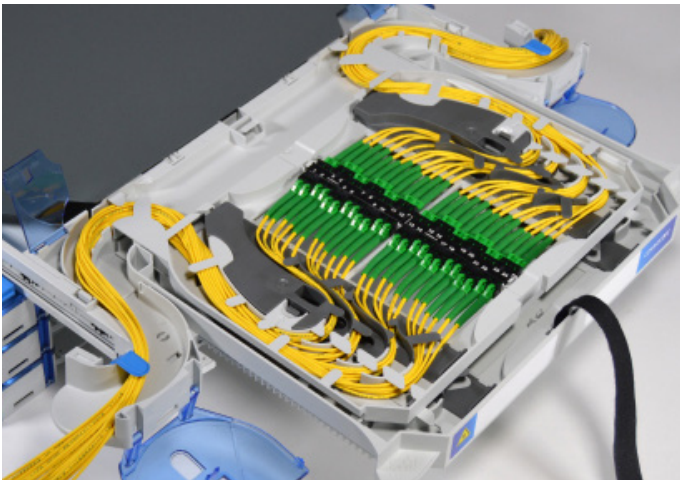
9.3. Open the back lid by pushing the snap feature to the inside and then lifting the lid.



9.4. Route the patch cords through the first bend as illustrated. Use 3 patch cords per bend control for the SC-SC Adapter Packs. Clean the connectors before installing!



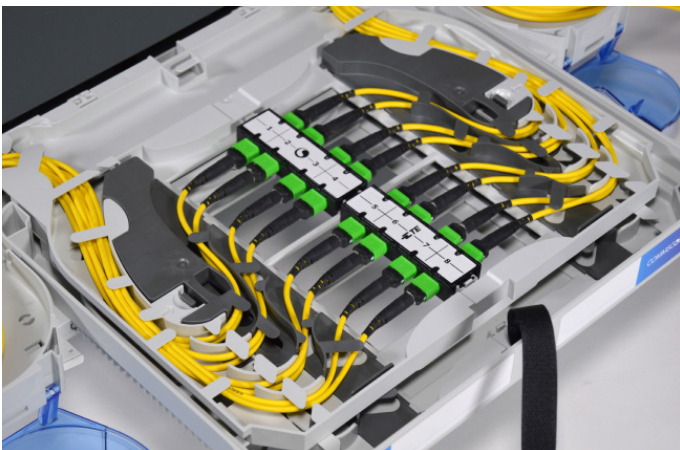
9.7. Route the patch cords to the back side of the FACT element.



9.5. Route the patch cords through the first bend as illustrated. Use 6 patch cords per bend control for the LC-LC Adapter Packs. Clean the connectors before installing!



9.8. When you route both trays, it should look as illustrated.



9.6. Route the patch cords through the first bend as illustrated. Use 2 patch cords per bend control for the MPO-MPO Adapter Packs. Clean the connectors before installing!



9.9. Carefully close the back lid.

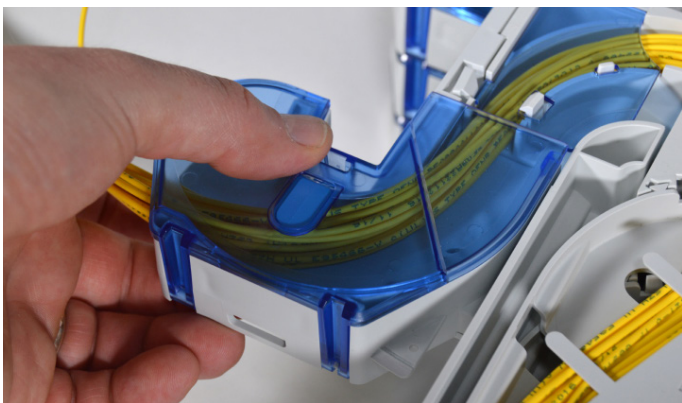
11. Contact information

Visit our website or contact your local CommScope representative for more information.

For technical assistance, customer service, or to report any missing/damaged parts, visit us at:
<http://www.commscope.com/SupportCenter>

This product may be covered by one or more U.S. patents or their foreign equivalents.

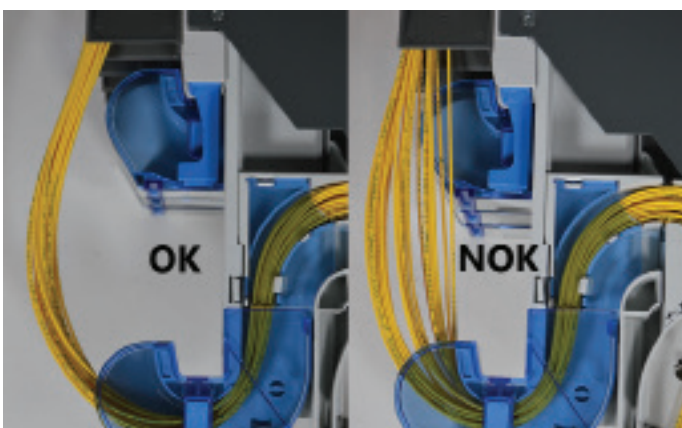
For patents, see www.cs-pat.com



9.10. Close the bend control cover (retaining feature down).



9.11. Route the patch cords through the trumpet.



9.12. Before closing the drawer, pay attention to the patch cord routing.

10. Trademarks

All trademarks identified by ® or ™ are registered trademarks or trademarks, respectively, of CommScope, Inc. This document is for planning purposes only and is not intended to modify or supplement any specifications or warranties relating to CommScope products or services. CommScope is committed to the highest standards of business integrity and environmental sustainability, with a number of CommScope's facilities across the globe certified in accordance with international standards, including ISO 9001, TL 9000, and ISO 14001.

Further information regarding CommScope's commitment can be found at www.commscope.com/About-Us/Corporate-Responsibility-and-Sustainability.