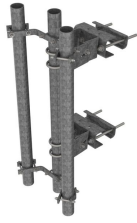


RR-DPM



Universal Open Pipe Mount Kit for straight or tapered legs

Product Classification

Product Type Pipe mount | Remote radio head unit mount

General Specifications

Mounting Angle 60°, 203.2 mm (8 in) | Angle 90°, 152.4 mm (6 in) | Straight or tapered legs up to 203.2 mm (8 in) OD

Pipe, quantity 1

Tower Taper Tapered

Dimensions

Height 1524 mm | 60 in

Width 457.2 mm | 18 in

Length 457.2 mm | 18 in

Pipe Length 1524 mm | 60 in

Mounting Diameter, maximum 203.2 mm | 8 in

Mounting Diameter, minimum 0 mm | 0 in

Pipe Outer Diameter 88.9 mm | 3.5 in

Material Specifications

Material Type Hot dip galvanized steel

Mechanical Specifications

Wind Rating 120 mph (BWS) at 100 ft AGL

Wind Rating Test Method TIA/EIA-222

Packaging and Weights

RR-DPM

Included	Brackets Hardware Pipe
Packaging quantity	1
Weight, net	109.2 kg 240.745 lb

Regulatory Compliance/Certifications

Agency	Classification
CHINA-ROHS	Below maximum concentration value
REACH-SVHC	Compliant as per SVHC revision on www.commscope.com/ProductCompliance
ROHS	Compliant
UK-ROHS	Compliant



* Footnotes

Wind Rating	BWS—Base Wind Speed; FBC—Florida Building Code
--------------------	--